

STATE OF FLORIDA
 COUNTY OF PALM BEACH
 THIS PLAN WAS FILED FOR
 RECORD AT _____ M.
 THIS _____ TH DAY OF _____
 AD, 1977 AND DULY RE-
 CORDED IN PLAT BOOK _____
 ON PAGES _____ AND _____
 JOHN B. DUNKLE, CLERK
 CIRCUIT COURT
 BY _____ DC

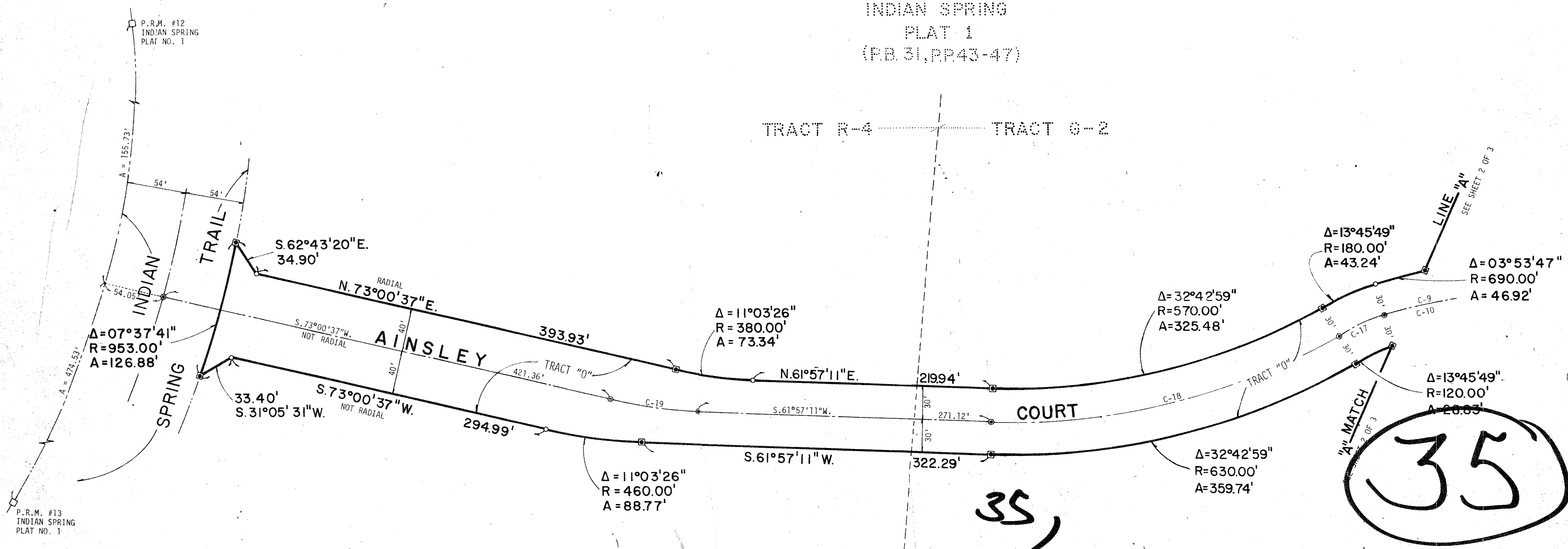
C. NO.	CENT. ANG.	RADIUS	ARC	CHORD	TANGENT
C-1	45°00'00"	195.00'	153.15'	149.25'	80.77'
C-2	45°00'00"	225.00'	176.72'	172.21'	93.20'
C-3	45°00'00"	255.00'	200.28'	195.17'	105.62'
C-4	17°37'22"	220.00'	67.67'	67.40'	34.10'
C-5	20°00'58"	600.00'	209.61'	208.54'	105.88'
C-6	03°25'08"	660.00'	39.38'	39.38'	19.70'
C-7	16°45'50"	660.00'	193.11'	192.42'	97.25'
C-8	02°58'23"	660.00'	34.25'	34.24'	17.13'
C-9	15°36'06"	660.00'	179.72'	179.17'	90.42'
C-10	15°08'30"	660.00'	174.42'	173.91'	87.72'
C-11	00°27'36"	660.00'	5.30'	5.30'	2.65'
C-12	23°09'21"	660.00'	266.74'	264.92'	135.21'
C-13	09°23'57"	690.00'	113.19'	113.06'	56.72'
C-14	02°18'23"	690.00'	27.77'	27.77'	13.89'
C-15	15°36'06"	690.00'	187.89'	187.31'	94.53'
C-16	15°36'06"	630.00'	171.55'	171.02'	86.31'
C-17	13°45'49"	180.00'	34.90'	34.90'	17.45'
C-18	32°42'59"	600.00'	342.61'	337.97'	176.12'
C-19	11°03'26"	420.00'	81.05'	80.93'	40.65'
C-20	01°06'18"	2000.00'	38.57'	38.57'	19.29'
C-21	06°32'30"	2000.00'	228.34'	228.22'	114.30'

A PLANNED UNIT DEVELOPMENT

THE VILLAS OF MONTEREY AT INDIAN SPRING

A parcel of land in the Northwest one-quarter of
 Section 35, Township 45 South, Range 42 East,
 being a replat of tracts R-3, P-1, and a part of R-4, F-1 &
 G-2, Indian Spring Plat No. 1, P.B. 31, PP. 43-47
 Palm Beach County, Florida. August, 1977

INDIAN SPRING
 PLAT 1
 (P.B. 31, PP. 43-47)



ACREAGE SUMMARY

(P, A, U & D) TRACT "A"	4.398 Ac.
(P, A, U & D) TRACT "B"	0.047 Ac.
(P, A, U & D) TRACT "C"	0.027 Ac.
(P, A, U & D) TRACT "D"	0.114 Ac.
(P, A, U & D) TRACT "E"	0.088 Ac.
(P, A, U & D) TRACT "F"	0.140 Ac.
(P, A, U & D) TRACT "G"	0.044 Ac.
(P, A, U & D) TRACT "H"	0.091 Ac.
(P, A, U & D) TRACT "I"	0.251 Ac.
(P, A, U & D) TRACT "J"	0.044 Ac.
(P, A, U & D) TRACT "K"	0.133 Ac.
(P, A, U & D) TRACT "L"	0.031 Ac.
(RECREATION) TRACT "M"	0.388 Ac.
(AINSLEY CT.) TRACT "N"	1.961 Ac.
(AINSLEY CT.) TRACT "O"	0.715 Ac.
LOTS 1-85	10.703 Ac.
TOTAL	19.175 Ac.

PLANNED UNIT DEVELOPMENT TABULATIONS

TOTAL AREA THIS PLAT	19.175 Ac.
LESS ROAD RIGHT-OF-WAY	2.676 Ac.
EQUALS EFFECTIVE BASE RESIDENTIAL AREA	16.499 Ac.
TOTAL UNITS THIS PLAT	85 Units
OPEN SPACE THIS PLAT	11.300 Ac.
DENSITY	4.433 Units/Ac.

INDIAN SPRING
 PLAT 1
 (P.B. 31, PP. 43-47)

VILLAS OF MONTEREY

NO.	DATE	DESCRIPTION	BY	DRAWN	FIELD BOOK	DATE	JOB NO.	SHEET
1				WSK	NO.	8/31/77	77-117	3
2				RJW	PG.			3
3					SCALE	1"=50'		

BENCH MARK
 LAND SURVEYING AND ENGINEERING, INC.
 189
 SURVEYING ENGINEERS
 PALM BEACH, FLORIDA

0259-308

35 / 45 / 42